

MOUNTAIN/CROSSOVER

ARCTIC CAT
SHARE OUR PASSION.™



MOUNTAIN/CROSSOVER



MY 2010 Technical Workshop

- 1. Model Lineup**
- 2. Key Product Features**
- 3. 2010 Improvements/Changes**
- 4. New Accessories**
- 5. Summary**

MOUNTAIN/CROSSOVER



2010 Mountain Model Line-up

- M6 153" Green
- M8 153"/162" Green
- M8 153"/162" SP White
- M1000 162" SP White



MOUNTAIN/CROSSOVER



2010 Mountain Spring-only Models

- M8 HCR Green
- M8 153" SP LE Black



MOUNTAIN/CROSSOVER



2010 Crossover Model Line-up

- CF6 141" x 1.25" Green
- CF8 141" x 1.25" Green
- CF8 141" x 1.50" White
- Z1 Turbo EXT Green



MOUNTAIN/CROSSOVER



2010 Crossover Spring-only Models

- CF8 SP LE Black
- Z1 Turbo EXT LE Apple Metallic Green



2010 M-Series Key Product Features

Item	Standard	Sno Pro	HCR	LE
Skis	6" saddleless (same as 2009)	6" saddleless (same as 2009)	6" Hillclimb	6" saddleless (same as 2009)
Ski Stance	39" - 41"	39" - 41"	42" - 44"	39" - 41"
Ski Shocks	Fox Zero Pro	Fox Float	Fox Zero Pro w/ Titanium springs	Fox Float
Handlebars	Non-telescopic	Telescopic	Telescopic	Telescopic
Speedometers	Standard	Deluxe	Deluxe	Deluxe
Skidframe	Float	Float	Float	Float
Track	80 duro Power Claw	80 duro Power Claw	90 duro Power Claw	80 duro Power Claw
Windshield	Low	Low	Flyscreen	Low
Paint	Pearl Cat Green	Pearl White	Pearl Cat Green	Flat Black

2010 Crossfire Key Product Features

Item	Standard	Sno Pro	LE
Skis	6" saddleless	6" saddleless	6" saddleless
Ski Stance	42" - 44"	42" - 44"	42" - 44"
Ski Shocks	Fox Zero Pro	Fox Float	Fox Float
Handlebars	Non-telescopic	Telescopic	Telescopic
Speedometers	Standard	Deluxe	Deluxe
Seat	Crossfire	Crossfire	M-Series (New)
Skidframe	Torsion Spring	Float	Float
Track	141" x 1.25" Cobra	141" x 1.50" Cobra	141" x 1.50" Cobra
Windshield	Mid	Low	Low
Paint	Pearl Cat Green	Pearl White	Flat Black

MOUNTAIN/CROSSOVER



Z1 Turbo EXT Key Product Features

- Twin Spar Chassis
- Designed primarily for on-trail usage
- Fox Zero Pro shocks
- High Performance handlebars w/ 3" IRP riser block
- Non-adjustable seat
- Slide-action rear skidframe
- LED Taillight



MOUNTAIN/CROSSOVER



Z1 Turbo EXT Key Product Features

- 144" x 1.25" Cobra Track
- Longer track and skidframe give smoother ride and more traction
- There is a 1.5" accessory Cross-country track available
- New rear tunnel setup, similar to 2010 F-series
- Utilizes many of the same accessories as the F-series



MOUNTAIN/CROSSOVER



New 800 H.O Engine

- 160+ HP
- 8,300 peak RPM
- 91 Octane fuel required
- M8 will use 55/65 gearing
- 4.5 lb weight reduction
- Fast, quick-revving
lightweight crankshaft
- Available on M8 and CF8



MOUNTAIN/CROSSOVER

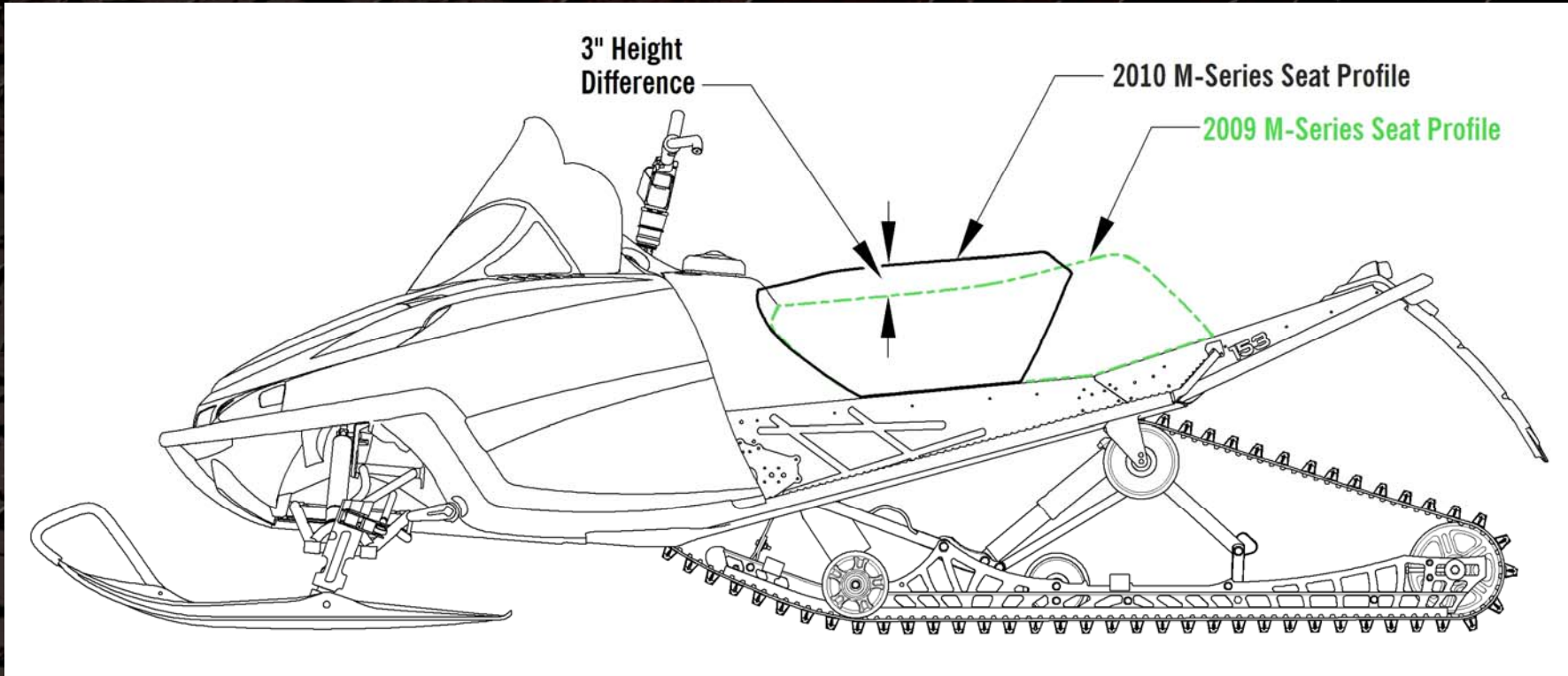


New MTN Seat

- 3.5 lb lighter than old seat
- 3" taller for easy sitting-to-standing transitions
- Keeps narrow fit in front for good stand-up ergonomics
- Blowmolded seatbase provides a large, snow-proof storage area
- Available on M-Series & CF8 SP LE



MOUNTAIN/CROSSOVER



MOUNTAIN/CROSSOVER

New Ski

- 6" wide vs. 5.5" last year
- 1.9 lb lighter than last year's ski
- 1/8" taller keel depth than 2009 trail ski
- Stiffer than 2009 trail ski and provides better cornering turn-in performance
- Available on Crossfires & Z1 Turbo EXT



ARCTIC CAT
SHARE OUR PASSION.

MOUNTAIN/CROSSOVER



New Hood Screens

- Prevents snow and ice forming under the front of the hood
- 400 micron opening size with 44 % open area allows air to pass through screen
- Thread diameter is 100 microns for increased puncture resistance
- Polyester mesh is hydrophobically treated to help prevent water from sticking to it
- Adhesive backing makes replacement of screen easy



MOUNTAIN/CROSSOVER



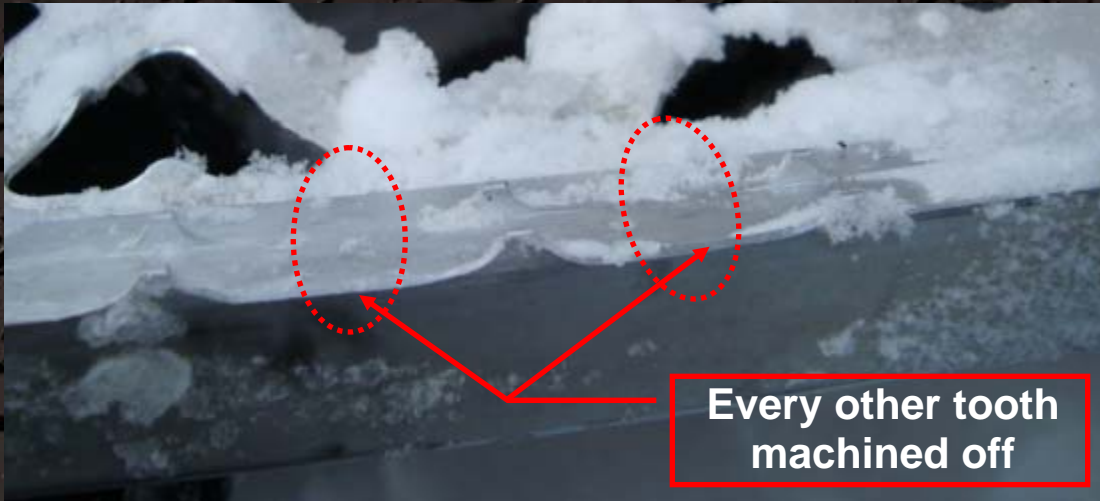
Modified Edge Rolls

- Machined every-other tooth from edge roll
- Prevents ice and snow from sticking as easily
- Easier to kick ice off of edge roll when it does build up

2010



2009

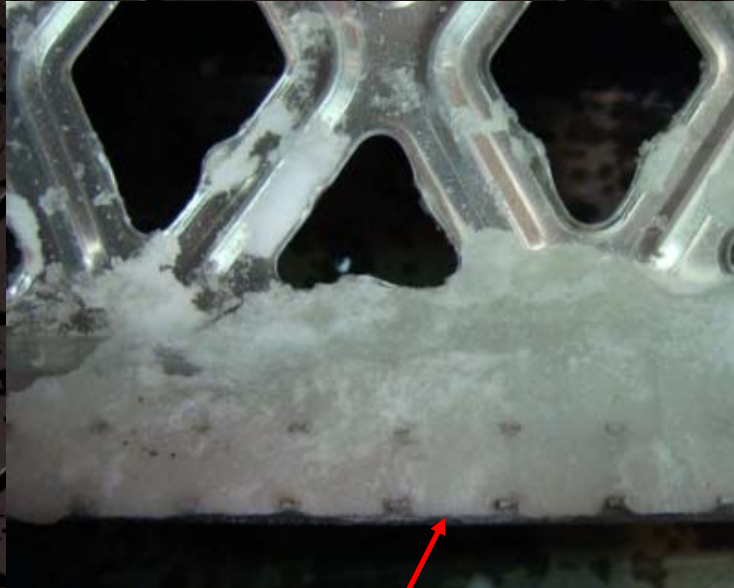


Every other tooth
machined off

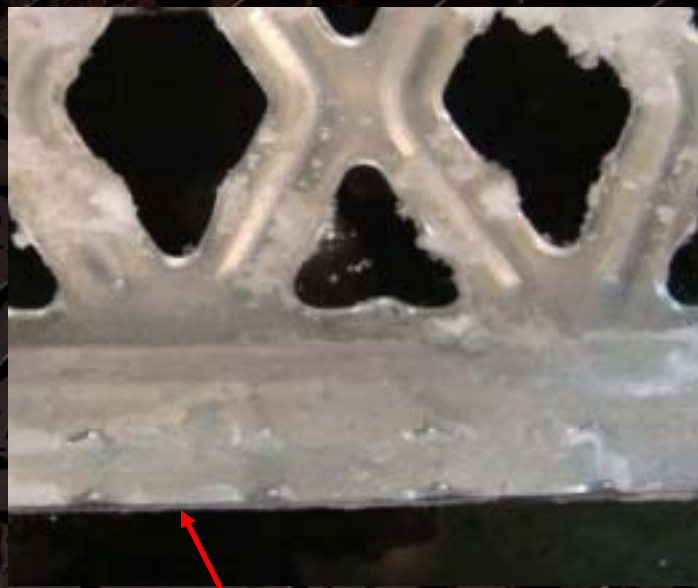
MOUNTAIN/CROSSOVER



Modified Edge Rolls



2009



2010



MOUNTAIN/CROSSOVER

New Driven Clutch Rollers

- Switched the 3 “power-side” clutch rollers to a hi-temp material
- Material is rated for temperatures up to 450 °F
- Will be OEM on all M8’s and M1000 162” SP
- Hi-temp rollers are also available as an accessory kit (p/n 5639-468)



Hi-temp rollers

MOUNTAIN/CROSSOVER



2010 M-series Weights

Model	Crated Weight (lb)		
	2009	2010	Loss
M6 153"	487.0	481.5	5.5
M8 153"	480.5	479.0	1.5
M8 162"	483.0	481.5	1.5
M8 153" SP	478.0	476.5	1.5
M8 162" SP	481.0	479.5	1.5
M8 153" SP LE	477.0	476.5	0.5
M8 153" HCR	479.0	479.0	0.0
M1000 162" SP	509.0	505.5	3.5

MOUNTAIN/CROSSOVER



New Lightweight Seat Accessory

- 3.5 lb (M-Series) & 5.5 lb (Crossfire/CFR) weight savings
- Available in orange, green, or black
- Fits on all M-Series, Crossfires, and CFR's
- An additional water-resistant liner bag is also available



MOUNTAIN/CROSSOVER



New Tunnel Storage Bag Accessories

- Quick-fasten straps that hook to tunnel and bottom of rear bumper
- Great for keeping things dry and organized
- Available in two different sizes
- Fits on 2010 F-Series, Z1s, Z1 Turbos, & Z1 Turbo EXT's



Mid-capacity



Large-capacity

MOUNTAIN/CROSSOVER

New Tow Hitch Accessory

- Easy installation – don't have to remove bumper
- Great for lighter duty towing needs

New Billet Axle Washers

- Add color & style to customize your ultra-lightweight skidframe
- Anodized billet aluminum available in green and silver



MOUNTAIN/CROSSOVER



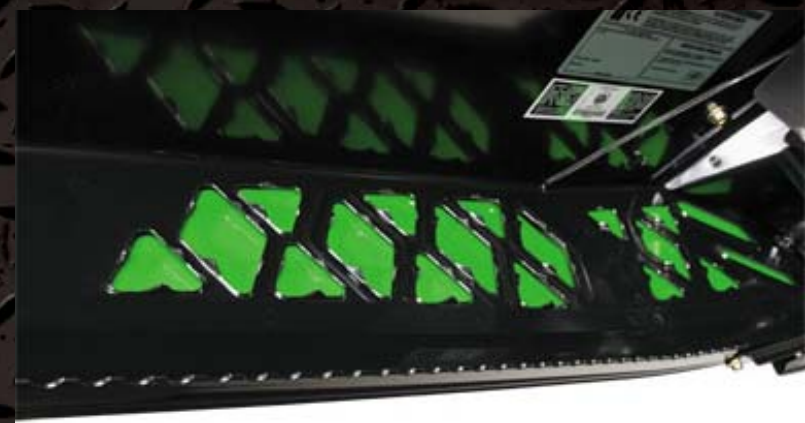
New Edge Roll Grip Plates

- Adds color and style while providing more traction and confidence
- Available in green, orange, and silver
- Fits 2010 F-series, Z1's, Z1 Turbos, and Turbo EXT's



New Tunnel Deflector Accessory

- Adds color and style while keeping running boards drier in springtime, slushy snow conditions
- Available in green, orange and silver
- Fits 2010 F-Series, Z1, Z1 Turbos, Turbo EXT's, M-Series, and Crossfires

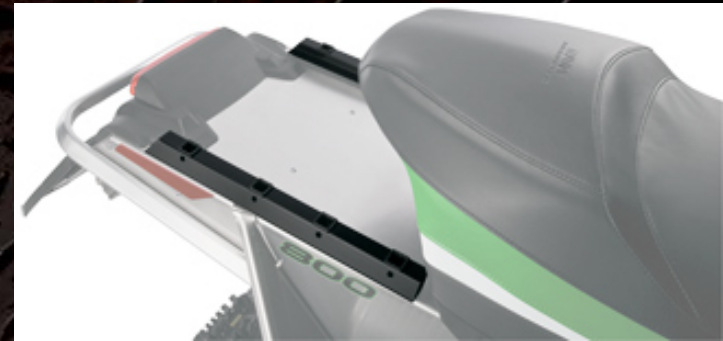


MOUNTAIN/CROSSOVER



New Tunnel Rail Accessories

- Tunnel rails provide quick-attach mounting platform (two different lengths)
- Quick-attach 2-up seat
- Quick-attach racks
- Fits 2010 F-series, Z1's, Z1 Turbos, and Turbo EXT's



MOUNTAIN/CROSSOVER



New Vent Screen Accessories

- Air intake screens have 125 micron mesh openings (38% open area) while the hood vent screens have the larger 400 micron mesh openings
- Keeps out snow but allows air to flow thru
- Adhesive backing makes replacement of screens easy
- Fits all M-Series, Crossfires & CFR's



MOUNTAIN/CROSSOVER



Z1 Turbo EXT Mountain Accessories

- Z1 Turbo EXT 162" Long-Track Kit
- Power Claw track (sold separately) has notches for heat exchanger clearance
- EXT Mountain strap easily fastens to the High Performance handlebars



MOUNTAIN/CROSSOVER



Summary

- New Z1 Turbo EXT
- New H.O. engine in the M8 and CF8 with 160+ HP
- New M-Series lightweight seat
- New 6" wide ski for Crossfires and Z1 Turbo EXT
- New hood vent screens
- Improved edge roll traction
- New hi-temp driven clutch rollers
- Several new accessories to complement the model and feature changes

MOUNTAIN/CROSSOVER



Thank You!!